



REFERENCE
CARDS

THE DECK OF MANY ANIMATED SPELLS

CANTRIPS

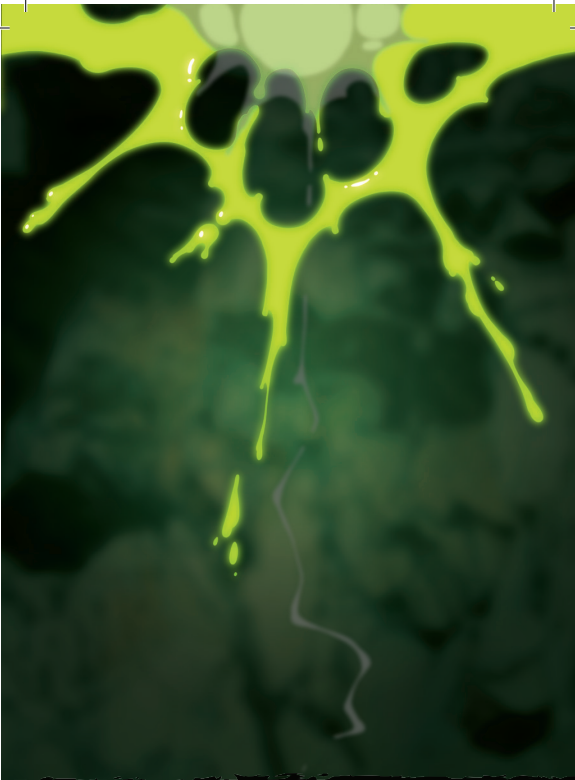
PRINT 'N PLAY PDF

JOIN OUR DISCORD:

deckofmany.com/discord

FOLLOW US ON TWITTER:

[@thedeckofmany](https://twitter.com/thedeckofmany)



ACID SPLASH

LEVEL 0
CONJURATION

1 ACTION 60' V, S INSTANT

ART: DARREN BIRD THE DECK OF MANY © HIT POINT PRESS INC. 2019

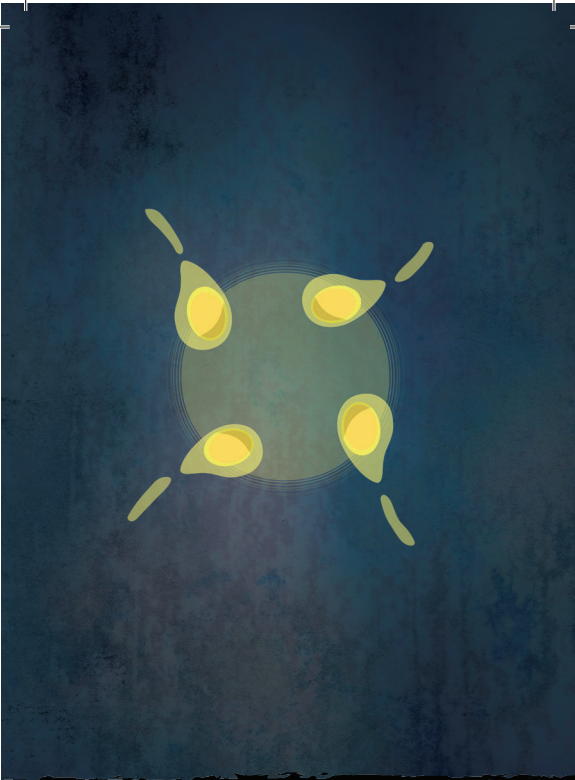


CHILL TOUCH

LEVEL 0
NECROMANCY

1 ACTION 120' V, S 1 ROUND

ART: DARREN BIRD THE DECK OF MANY © HIT POINT PRESS INC. 2019




DANCING LIGHTS

LEVEL 0
EVOCATION

1 ACTION 120' V, S, M C. 1 MIN

ART: JORDAN RICHER THE DECK OF MANY © HIT POINT PRESS INC. 2019



DRUIDCRAFT

LEVEL 0
TRANSMUTATION

1 ACTION 30' V, S INSTANT

ART: DARREN BIRD THE DECK OF MANY © HIT POINT PRESS INC. 2019

CHILL TOUCH

NECROMANCY CANTRIP



CASTING TIME

1 Action



RANGE

120 Feet



COMPONENTS

V, S



DURATION

1 Round

You create a ghostly, skeletal hand in the space of a creature within range. Make a ranged spell attack against the creature to assail it with the chill of the grave. On a hit, the target takes 1d8 necrotic damage, and it can't regain hit points until the start of your next turn. Until then, the hand clings to the target.

If you hit an undead target, it also has disadvantage on attack rolls against you until the end of your next turn.

This spell's damage increases by 1d8 when you reach 5th level (2d8), 11th level (3d8), and 17th level (4d8).

SORCERER | WARLOCK | WIZARD

ACID SPLASH

CONJURATION CANTRIP



CASTING TIME

1 Action



RANGE

60 Feet



COMPONENTS

V, S



DURATION

Instantaneous

You hurl a bubble of acid. Choose one creature within range, or choose two creatures within range that are within 5 feet of each other. A target must succeed on a Dexterity saving throw or take 1d6 acid damage.

This spell's damage increases by 1d6 when you reach 5th level (2d6), 11th level (3d6), and 17th level (4d6).

SORCERER | WIZARD

DRUIDCRAFT

TRANSMUTATION CANTRIP



CASTING TIME

1 Action



RANGE

30 Feet



COMPONENTS

V, S



DURATION

Instantaneous

Whispering to the spirits of nature, you create one of the following effects within range:

- You create a tiny, harmless sensory effect that predicts what the weather will be at your location for the next 24 hours. The effect might manifest as a golden orb for clear skies, a cloud for rain, falling snowflakes for snow, and so on. This effect persists for 1 round.
- You instantly make a flower blossom, a seed pod open, or a leaf bud bloom.
- You create an instantaneous, harmless sensory effect, such as falling leaves, a puff of wind, the sound of a small animal, or the faint odor of skunk. The effect must fit in a 5-foot cube.
- You instantly light or snuff out a candle, a torch, or a small campfire.

DRUID

DANCING LIGHTS

EVOCATION CANTRIP



CASTING TIME

1 Action



RANGE

120 Feet



COMPONENTS

V, S, M



DURATION

Concentration,
up to 1 minute

You create up to four torch-sized lights within range, making them appear as torches, lanterns, or glowing orbs that hover in the air for the duration. You can also combine the four lights into one glowing vaguely humanoid form of Medium size. Whichever form you choose, each light sheds dim light in a 10-foot radius.

As a bonus action on your turn, you can move the lights up to 60 feet to a new spot within range. A light must be within 20 feet of another light created by this spell, and a light winks out if it exceeds the spell's range.

MATERIAL COMPONENTS

A bit of phosphorus or wychwood, or a glowworm.

BARD | SORCERER | WIZARD



ELDRITCH BLAST LEVEL 0
EVOCATION

1 ACTION 120' V, S INSTANT

ANIMATION: DARREN BIRD THE DECK OF MANY © HIT POINT PRESS INC. 2019



FIRE BOLT LEVEL 0
EVOCATION

1 ACTION 120' V, S INSTANT

ART: DARREN BIRD THE DECK OF MANY © CARDAMAGIC.COM 2019



GUIDANCE LEVEL 0
DIVINATION

1 ACTION TOUCH V, S C. 1 MIN

ANIMATION: STEFAN GRAMBART THE DECK OF MANY © HIT POINT PRESS INC. 2019



LIGHT LEVEL 0
EVOCATION

1 ACTION TOUCH V, M 1 HR

ANIMATION: DARREN BIRD THE DECK OF MANY © HIT POINT PRESS INC. 2019

FIRE BOLT

EVOCATION CANTRIP



CASTING TIME

1 Action



RANGE

120 Feet



COMPONENTS

V, S



DURATION

Instantaneous

You hurl a mote of fire at a creature or object within range. Make a ranged spell attack against the target. On a hit, the target takes 1d10 fire damage. A flammable object hit by this spell ignites if it isn't being worn or carried.

This spell's damage increases by 1d10 when you reach 5th level (2d10), 11th level (3d10), and 17th level (4d10).

SORCERER | WIZARD

ELDRITCH BLAST

EVOCATION CANTRIP



CASTING TIME

1 Action



RANGE

120 Feet



COMPONENTS

V, S



DURATION

Instantaneous

A beam of crackling energy streaks toward a creature within range. Make a ranged spell attack against the target. On a hit, the target takes 1d10 force damage.

The spell creates more than one beam when you reach higher levels: two beams at 5th level, three beams at 11th level, and four beams at 17th level. You can direct the beams at the same target or at different ones. Make a separate attack roll for each beam.

WARLOCK

LIGHT

EVOCATION CANTRIP



CASTING TIME

1 Action



RANGE

Touch



COMPONENTS

V, M



DURATION

1 Hour

You touch one object that is no larger than 10 feet in any dimension. Until the spell ends, the object sheds bright light in a 20-foot radius and dim light for an additional 20 feet. The light can be colored as you like. Completely covering the object with something opaque blocks the light. The spell ends if you cast it again or dismiss it as an action.

If you target an object held or worn by a hostile creature, that creature must succeed on a Dexterity saving throw to avoid the spell.

MATERIAL COMPONENTS

A firefly or phosphorescent moss.

BARD | CLERIC | SORCERER | WIZARD

GUIDANCE

DIVINATION CANTRIP



CASTING TIME

1 Action



RANGE

Touch



COMPONENTS

V, S



DURATION

Concentration,
up to 1 minute

You touch one willing creature. Once before the spell ends, the target can roll a d4 and add the number rolled to one ability check of its choice. It can roll the die before or after making the ability check. The spell then ends.

CLERIC | DRUID



MAGE HAND

LEVEL 0
CONJURATION

1 ACTION 30' V, S 1 MIN

ANIMATION: GIOVANNI BARROTU

THE DECK OF MANY © HIT POINT PRESS INC. 2019



MENDING

LEVEL 0
TRANSMUTATION

1 MIN TOUCH V, S, M INSTANT

ANIMATION: BEN RAVID

THE DECK OF MANY © HIT POINT PRESS INC. 2019



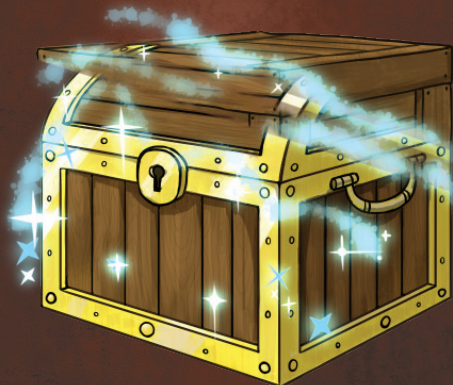
MESSAGE

LEVEL 0
TRANSMUTATION

1 ACTION 120' V, S, M 1 ROUND

ANIMATION: STEFAN GRAMBART

THE DECK OF MANY © HIT POINT PRESS INC. 2019



MINOR ILLUSION

LEVEL 0
ILLUSION

1 ACTION 30' S, M 1 MIN

ANIMATION: SHAWN PYKE

THE DECK OF MANY © HIT POINT PRESS INC. 2019

MENDING

TRANSMUTATION CANTRIP



CASTING TIME

1 Minute



RANGE

Touch



COMPONENTS

V, S, M



DURATION

Instantaneous

This spell repairs a single break or tear in an object you touch, such as a broken chain link, two halves of a broken key, a torn cloak, or a leaking wineskin. As long as the break or tear is no larger than 1 foot in any dimension, you mend it, leaving no trace of the former damage.

This spell can physically repair a magic item or construct, but the spell can't restore magic to such an object.

MATERIAL COMPONENTS

Two lodestones.

BARD | CLERIC | DRUID | SORCERER | WIZARD

MAGE HAND

CONJURATION CANTRIP



CASTING TIME

1 Action



RANGE

30 Feet



COMPONENTS

V, S



DURATION

1 Minute

A spectral, floating hand appears at a point you choose within range. The hand lasts for the duration or until you dismiss it as an action. The hand vanishes if it is ever more than 30 feet away from you or if you cast this spell again.

You can use your action to control the hand. You can use the hand to manipulate an object, open an unlocked door or container, stow or retrieve an item from an open container, or pour the contents out of a vial. You can move the hand up to 30 feet each time you use it.

The hand can't attack, activate magic items, or carry more than 10 pounds.

BARD | SORCERER | WARLOCK | WIZARD

MINOR ILLUSION

ILLUSION CANTRIP



CASTING TIME

1 Action



RANGE

30 Feet



COMPONENTS

S, M



DURATION

1 Minute

You create a sound or an image of an object within range that lasts for the duration. The illusion also ends if you dismiss it as an action or cast this spell again.

If you create a sound, its volume can range from a whisper to a scream. It can be your voice, someone else's voice, a lion's roar, a beating of drums, or any other sound you choose. The sound continues unabated throughout the duration, or you can make discrete sounds at different times before the spell ends.

If you create an image of an object – such as a chair, muddy footprints, or a small chest – it must be no larger than a 5-foot cube. The image can't create sound, light, smell, or any other sensory effect. Physical interaction with the image reveals it to be an illusion, because things can pass through it.

If a creature uses its action to examine the sound or image, the creature can determine that it is an illusion with a successful Intelligence (Investigation) check against your spell save DC. If a creature discerns the illusion for what it is, the illusion becomes faint to the creature.

MATERIAL COMPONENTS

A bit of fleece.

BARD | SORCERER | WARLOCK | WIZARD

MESSAGE

TRANSMUTATION CANTRIP



CASTING TIME

1 Action



RANGE

120 Feet



COMPONENTS

V, S, M



DURATION

1 Round

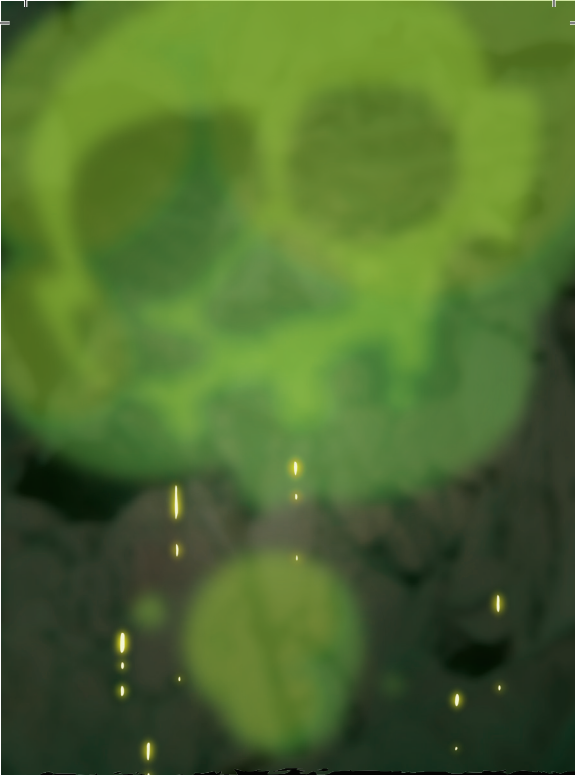
You point your finger toward a creature within range and whisper a message. The target (and only the target) hears the message and can reply in a whisper that only you can hear.

You can cast this spell through solid objects if you are familiar with the target and know it is beyond the barrier. Magical silence, 1 foot of stone, 1 inch of common metal, a thin sheet of lead, or 3 feet of wood blocks the spell. The spell doesn't have to follow a straight line and can travel freely around corners or through openings.

MATERIAL COMPONENTS

A short piece of copper wire.

BARD | SORCERER | WIZARD



POISON SPRAY **LEVEL 0**
CONJURATION

1 ACTION 10' V, S INSTANT

ART: DARREN BIRD THE DECK OF MANY © HIT POINT PRESS INC. 2019



PRESTIDIGITATION **LEVEL 0**
TRANSMUTATION

1 ACTION 10' V, S 1 HR

ANIMATION: SHAWN PYKE THE DECK OF MANY © HIT POINT PRESS INC. 2019



PRODUCE FLAME **LEVEL 0**
CONJURATION

1 ACTION SELF V, S 10 MIN

ANIMATION: DARREN BIRD THE DECK OF MANY © HIT POINT PRESS INC. 2019



RAY OF FROST **LEVEL 0**
EVOcation

1 ACTION 60' V, S INSTANT

ART: DARREN BIRD THE DECK OF MANY © HIT POINT PRESS INC. 2019

PRESTIDIGITATION

TRANSMUTATION CANTRIP



CASTING TIME

1 Action



RANGE

10 Feet



COMPONENTS

V, S



DURATION

Up to 1 hour

This spell is a minor magical trick that novice spellcasters use for practice. You create one of the following magical effects within range:

- You create an instantaneous, harmless sensory effect, such as a shower of sparks, a puff of wind, faint musical notes, or an odd odor.
- You instantaneously light or snuff out a candle, a torch, or a small campfire.
- You instantaneously clean or soil an object no larger than 1 cubic foot.
- You chill, warm, or flavor up to 1 cubic foot of nonliving material for 1 hour.
- You make a color, a small mark, or a symbol appear on an object or a surface for 1 hour.
- You create a nonmagical trinket or an illusory image that can fit in your hand and that lasts until the end of your next turn.

If you cast this spell multiple times, you can have up to three of its non-instantaneous effects active at a time, and you can dismiss such an effect as an action.

BARD | SORCERER | WARLOCK | WIZARD

POISON SPRAY

CONJURATION CANTRIP



CASTING TIME

1 Action



RANGE

10 Feet



COMPONENTS

V, S



DURATION

Instantaneous

You extend your hand toward a creature you can see within range and project a puff of noxious gas from your palm. The creature must succeed on a Constitution saving throw or take 1d12 poison damage.

This spell's damage increases by 1d12 when you reach 5th level (2d12), 11th level (3d12), and 17th level (4d12).

DRUID | SORCERER | WARLOCK | WIZARD

RAY OF FROST

EVOCATION CANTRIP



CASTING TIME

1 Action



RANGE

60 Feet



COMPONENTS

V, S



DURATION

Instantaneous

A frigid beam of blue-white light streaks toward a creature within range. Make a ranged spell attack against the target. On a hit, it takes 1d8 cold damage, and its speed is reduced by 10 feet until the start of your next turn.

The spell's damage increases by 1d8 when you reach 5th level (2d8), 11th level (3d8), and 17th level (4d8).

SORCERER | WIZARD

PRODUCE FLAME

CONJURATION CANTRIP



CASTING TIME

1 Action



RANGE

Self



COMPONENTS

V, S



DURATION

10 Minutes

A flickering flame appears in your hand. The flame remains there for the duration and harms neither you nor your equipment. The flame sheds bright light in a 10-foot radius and dim light for an additional 10 feet. The spell ends if you dismiss it as an action or if you cast it again.

You can also attack with the flame, although doing so ends the spell. When you cast this spell, or as an action on a later turn, you can hurl the flame at a creature within 30 feet of you. Make a ranged spell attack. On a hit, the target takes 1d8 fire damage.

This spell's damage increases by 1d8 when you reach 5th level (2d8), 11th level (3d8), and 17th level (4d8).

DRUID



RESISTANCE

LEVEL 0
ABJURATION

1 ACTION TOUCH V, S, M C. 1 MIN

ANIMATION: SAM ALLEN THE DECK OF MANY © HIT POINT PRESS INC. 2019



SACRED FLAME

LEVEL 0
EVOCATION

1 ACTION 60' V, S INSTANT

ANIMATION: DARREN BIRD THE DECK OF MANY © HIT POINT PRESS INC. 2019



SHILLELAGH

LEVEL 0
TRANSMUTATION

1 BONUS TOUCH V, S, M 1 MIN

ANIMATION: JORDAN RICHER THE DECK OF MANY © HIT POINT PRESS INC. 2019



SHOCKING GRASP

LEVEL 0
EVOCATION

1 ACTION TOUCH V, S INSTANT

ANIMATION: DARREN BIRD THE DECK OF MANY © HIT POINT PRESS INC. 2019

SACRED FLAME

EVOCATION CANTRIP



CASTING TIME

1 Action



RANGE

60 Feet



COMPONENTS

V, S



DURATION

Instantaneous

Flame-like radiance descends on a creature that you can see within range. The target must succeed on a Dexterity saving throw or take 1d8 radiant damage. The target gains no benefit from cover for this saving throw.

The spell's damage increases by 1d8 when you reach 5th level (2d8), 11th level (3d8), and 17th level (4d8).

CLERIC

RESISTANCE

ABJURATION CANTRIP



CASTING TIME

1 Action



RANGE

Touch



COMPONENTS

V, S, M



DURATION

Concentration,
up to 1 minute

You touch one willing creature. Once before the spell ends, the target can roll a d4 and add the number rolled to one saving throw of its choice. It can roll the die before or after making the saving throw. The spell then ends.

MATERIAL COMPONENTS

A miniature cloak.

CLERIC | DRUID

SHOCKING GRASP

EVOCATION CANTRIP



CASTING TIME

1 Action



RANGE

Touch



COMPONENTS

V, S



DURATION

Instantaneous

Lightning springs from your hand to deliver a shock to a creature you try to touch. Make a melee spell attack against the target. You have advantage on the attack roll if the target is wearing armor made of metal. On a hit, the target takes 1d8 lightning damage, and it can't take reactions until the start of its next turn.

The spell's damage increases by 1d8 when you reach 5th level (2d8), 11th level (3d8), and 17th level (4d8).

SORCERER | WIZARD

SHILLELAGH

TRANSMUTATION CANTRIP



CASTING TIME

1 Bonus Action



RANGE

Touch



COMPONENTS

V, S, M



DURATION

1 Minute

The wood of a club or quarterstaff you are holding is imbued with nature's power. For the duration, you can use your spellcasting ability instead of Strength for the attack and damage rolls of melee attacks using that weapon, and the weapon's damage die becomes a d8. The weapon also becomes magical, if it isn't already. The spell ends if you cast it again or if you let go of the weapon.

MATERIAL COMPONENTS

Mistletoe, a shamrock leaf, and a club or quarterstaff.

DRUID



SPARE THE DYING

LEVEL 0
NECROMANCY

1 ACTION TOUCH V, S INSTANT

ANIMATION: GABRIEL LAVOYER

THE DECK OF MANY © HIT POINT PRESS INC. 2019



THAUMATURGY

LEVEL 0
TRANSMUTATION

1 ACTION 30' V 1 MIN

ANIMATION: STEFAN GRAMBART

THE DECK OF MANY © HIT POINT PRESS INC. 2019



TRUE STRIKE

LEVEL 0
DIVINATION

1 ACTION 30' S C.1 RND

ANIMATION: SHAWN PYKE

THE DECK OF MANY © HIT POINT PRESS INC. 2019



VICIOUS MOCKERY

LEVEL 0
ENCHANTMENT

1 ACTION 60' V INSTANT

ANIMATION: SHAWN PYKE

THE DECK OF MANY © HIT POINT PRESS INC. 2019

THAUMATURGY

TRANSMUTATION CANTRIP



CASTING TIME

1 Action



RANGE

30 Feet



COMPONENTS

V



DURATION

Up to 1 minute

You manifest a minor wonder, a sign of supernatural power, within range. You create one of the following magical effects within range:

- Your voice booms up to three times as loud as normal for 1 minute.
- You cause flames to flicker, brighten, dim, or change color for 1 minute.
- You cause harmless tremors in the ground for 1 minute.
- You create an instantaneous sound that originates from a point of your choice within range, such as a rumble of thunder, the cry of a raven, or ominous whispers.
- You instantaneously cause an unlocked door or window to fly open or slam shut.
- You alter the appearance of your eyes for 1 minute.

If you cast this spell multiple times, you can have up to three of its 1-minute effects active at a time, and you can dismiss such an effect as an action.

CLERIC

SPARE THE DYING

NECROMANCY CANTRIP



CASTING TIME

1 Action



RANGE

Touch



COMPONENTS

V, S



DURATION

Instantaneous

You touch a living creature that has 0 hit points. The creature becomes stable. This spell has no effect on undead or constructs.

CLERIC

VICIOUS MOCKERY

ENCHANTMENT CANTRIP



CASTING TIME

1 Action



RANGE

60 Feet



COMPONENTS

V



DURATION

Instantaneous

You unleash a string of insults laced with subtle enchantments at a creature you can see within range. If the target can hear you (though it need not understand you), it must succeed on a Wisdom saving throw or take 1d4 psychic damage and have disadvantage on the next attack roll it makes before the end of its next turn.

This spell's damage increases by 1d4 when you reach 5th level (2d4), 11th level (3d4), and 17th level (4d4).

BARD

TRUE STRIKE

DIVINATION CANTRIP



CASTING TIME

1 Action



RANGE

30 Feet



COMPONENTS

S



DURATION

Concentration,
up to 1 hour

You extend your hand and point a finger at a target in range. Your magic grants you a brief insight into the target's defenses. On your next turn, you gain advantage on your first attack roll against the target, provided that this spell hasn't ended.

BARD | SORCERER | WARLOCK | WIZARD

LICENCE

The terms of the Open Gaming License Version 1.0a are as follows:

OPEN GAME LICENSE Version 1.0a

The following text is the property of Wizards of the Coast, Inc. and is Copyright 2000 Wizards of the Coast, Inc ("Wizards"). All Rights Reserved. 1. Definitions: (a) "Contributors" means the copyright and/or trademark owners who have contributed Open Game Content; (b) "Derivative Material" means copyrighted material including derivative works and translations (including into other computer languages), potation, modification, correction, addition, extension, upgrade, improvement, compilation, abridgment or other form in which an existing work may be recast, transformed or adapted; (c) "Distribute" means to reproduce, license, rent, lease, sell, broadcast, publicly display, transmit or otherwise distribute; (d) "Open Game Content" means the game mechanic and includes the methods, procedures, processes and routines to the extent such content does not embody the Product Identity and is an enhancement over the prior art and any additional content clearly identified as Open Game Content by the Contributor, and means any work covered by this License, including translations and derivative works under copyright law, but specifically excludes Product Identity. (e) "Product Identity" means product and product line names, logos and identifying marks including trade dress; artifacts; creatures characters; stories, storylines, plots, thematic elements, dialogue, incidents, language, artwork, symbols, designs, depictions, likenesses, formats, poses, concepts, themes and graphic, photographic and other visual or audio representations; names and descriptions of characters, spells, enchantments, personalities, teams, personas, likenesses and special abilities; places, locations, environments, creatures, equipment, magical or supernatural abilities or effects, logos, symbols, or graphic designs; and any other trademark or registered trademark clearly identified as Product identity by the owner of the Product Identity, and which specifically excludes the Open Game Content; (f) "Trademark" means the logos, names, mark, sign, motto, designs that are used by a Contributor to identify itself or its products or the associated products contributed to the Open Game License by the Contributor (g) "Use", "Used" or "Using" means to use, Distribute, copy, edit, format, modify, translate and otherwise create Derivative Material of Open Game

Content. (h) "You" Not for resale. Permission granted to print or photocopy this document for personal use only. System Reference Document 5.1 2 or "Your" means the licensee in terms of this agreement.

2. The License: This License applies to any Open Game Content that contains a notice indicating that the Open Game Content may only be Used under and in terms of this License. You must affix such a notice to any Open Game Content that you Use. No terms may be added to or subtracted from this License except as described by the License itself. No other terms or conditions may be applied to any Open Game Content distributed using this License.

3. Offer and Acceptance: By Using the Open Game Content You indicate Your acceptance of the terms of this License.

4. Grant and Consideration: In consideration for agreeing to use this License, the Contributors grant You a perpetual, worldwide, royalty-free, nonexclusive license with the exact terms of this License to Use, the Open Game Content.

5. Representation of Authority to Contribute: If You are contributing original material as Open Game Content, You represent that Your Contributions are Your original creation and/or You have sufficient rights to grant the rights conveyed by this License.

6. Notice of License Copyright: You must update the COPYRIGHT NOTICE portion of this License to include the exact text of the COPYRIGHT NOTICE of any Open Game Content You are copying, modifying or distributing, and You must add the title, the copyright date, and the copyright holder's name to the COPYRIGHT NOTICE of any original Open Game Content you Distribute.

7. Use of Product Identity: You agree not to Use any Product Identity, including as an indication as to compatibility, except as expressly licensed in another, independent Agreement with the owner of each element of that Product Identity. You agree not to indicate compatibility or co-adaptability with any Trademark or Registered Trademark in conjunction with a work containing Open Game Content except as expressly licensed in another, independent Agreement with the owner of such Trademark or Registered Trademark. The use of any Product

Identity in Open Game Content does not constitute a challenge to the ownership of that Product Identity. The owner of any Product Identity used in Open Game Content shall retain all rights, title and interest in and to that Product Identity.

8. Identification: If you distribute Open Game Content You must clearly indicate which portions of the work that you are distributing are Open Game Content.

9. Updating the License: Wizards or its designated Agents may publish updated versions of this License. You may use any authorized version of this License to copy, modify and distribute any Open Game Content originally distributed under any version of this License.

10. Copy of this License: You MUST include a copy of this License with every copy of the Open Game Content You Distribute.

11. Use of Contributor Credits: You may not market or advertise the Open Game Content using the name of any Contributor unless You have written permission from the Contributor to do so.

12. Inability to Comply: If it is impossible for You to comply with any of the terms of this License with respect to some or all of the Open Game Content due to statute, judicial order, or governmental regulation then You may not Use any Open Game Material so affected.

13. Termination: This License will terminate automatically if You fail to comply with all terms herein and fail to cure such breach within 30 days of becoming aware of the breach. All sublicenses shall survive the termination of this License.

14. Reformation: If any provision of this License is held to be unenforceable, such provision shall be reformed only to the extent necessary to make it enforceable.

15. COPYRIGHT NOTICE Open Game License v 1.0a Copyright 2000, Wizards of the Coast, LLC.

System Reference Document 5.1 Copyright 2016, Wizards of the Coast, Inc.; Authors Mike Mearls, Jeremy Crawford, Chris Perkins, Rodney Thompson, Peter Lee, James Wyatt, Robert J. Schwalb, Bruce R. Cordell, Chris Sims, and Steve Townshend, based on original material by E. Gary Gygax and Dave Arneson.

END OF LICENSE

PRODUCT IDENTITY

The following items are designated Product Identity, as defined in Section 1(e) of the Open Gaming License Version 1.0a and are subject to the conditions set forth in Section 7 of the Open Gaming Licence, and are not Open Content:

All artwork, including but not limited to, works created by Darren Bird, Shawn Pyke, Jordan Richer, Ben Ravid, Giovanni Barrotou, Stefan Grambart, Sam Allen, Gabriel Lavoyer

Hit Point Press Inc. branding, including but not limited to, logos, trademarks, graphic design, layouts and identifying marks,

The Deck of Many branding, including but not limited to logos, trademarks, graphic design, layouts and identifying marks,

The Deck of Many Animated Spells branding, including but not limited to, logos, trademarks, graphic design, layouts and identifying marks,

Graphic design elements of the Deck of Many, including but not limited to, layouts, box design, graphics, and iconography,

All text created by Hit Point Press Inc. not found in the Open Gaming License Version 1.0a, System Reference Document 5.1 found at the internet link http://media.wizards.com/2016/downloads/DND/SRD-OGL_V5.1.pdf,

Promotional materials for the Deck of Many, including but not limited to, video, animation, and social media content,

All merchandise associated with the Deck of Many, including but not limited to, enamel pins, deck boxes, books, figurines, card names, statistics, abilities, spells, and all information found on all cards.

OPEN GAMING CONTENT

All content from the System Reference Document 5.1 is Open Game Content as described in Section 1(d) of the License. No portion of this work other than the material designated as Open Game Content may be reproduced in any form without permission.